

Current Date:	8/4/2014	Change on Day:	-0.06%
Total Return since 1/1/12:	98.35%	MSCI World Change on Day	0.26%
T12M Return:	35.67%	No of Positions (+MTM) on Day	213
T90 Day Return:	6.63%	No of Positions (-MTM) on Day	144
T30 Day Return:	-5.75%	Current No. of Positions:	385
Current Long Exposure @ Cost:	5,653,315	Current Leverage (Gross Exposures):	3.51
Current Short Exposure @ Cost:	(1,306,275)		
Net Exposure:	4,347,040		
Starting Capital:	1,000,000		
Current NAV:	1,983,504		

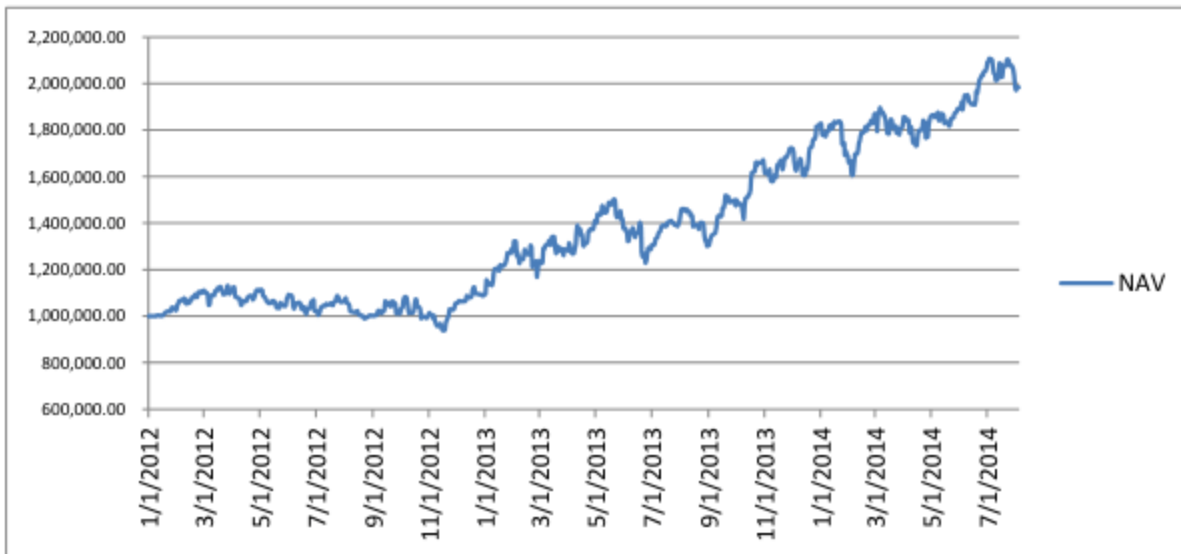
**Key Metrics**

Profit Factor:	Historically 2.25X - 3.25X, depending on measurement interval	
Win Ratio:	40% - 50% historically	
T24M (+) NAV Days	53%	No. of Profitable Positions T12M
T24M Avg. Daily NAV (+) Change	0.98%	
T24M Avg. Daily NAV (-) Change	-0.90%	Avg. Realized Gain / Avg. Realized Loss
Target Vol-Adj. Risk Listed Equities	50.00%	3.17
Target Vol-Adj. Risk Global Macro	50.00%	
Targeted Max Loss (ex-Leverage)	10.00%	
Leverage Target At Inception:	2X	

Notes on Leverage: We implement leverage of 2X, in other words at inception we upsize our positions by a factor two times greater than our volatility adjusted position sizing. Leverage levels can be customized to each investor.

T24M Sharpe Ratio:	1.21
Sharpe Since 1/1/12:	1.30

Historical Sharpe & Notes: Historical sharpe ratio is in excess of 2.0X (backtest from 1995, see Investor Presentation). Our sharpe ratio increases materially during market downturns in excess of 20 days of realized volatility. Since we generate positive returns in these environments, the variance in our downside volatility is materially less than broader markets. Recessions, which generally result in market directionality in excess of 20 days of volatility are significant alpha capture opportunities for us. Additionally, by never dollar cost averaging and concurrently adding to our winners we have an inherent assymetry in our volatility profile.



Largest Exposures Current Positions 97.5th Percentile 2.5th Percentile (@ cost ex-MTM)			Largest MTM Gains Current Positions (90th Percentile MTM Gains % NAV)		
Security	Notional	% of Total Notional	Security	MTM Gain	% Total NAV
20 Positions		29.26%	40 Positions		18.61%
INDEXCF Index	(61,017)	0.88%	DTV US Equity	4,086	0.21%
NG1 Comdty	(61,837)	0.89%	NOK US Equity	4,419	0.22%
CAC Index	(62,017)	0.89%	AT_TSY CREDIT	4,636	0.23%
SXNP Index	(62,472)	0.90%	XLB US Equity	4,651	0.23%
SXOP Index	(69,139)	0.99%	XLI US Equity	4,653	0.23%
NO_TSY CREDIT	(70,342)	1.01%	AGN US Equity	4,687	0.24%
SXRP Index	(80,697)	1.16%	HON US Equity	4,702	0.24%
DE_TSY CREDIT	84,524	1.21%	FR_TSY CREDIT	5,055	0.25%
FI_TSY CREDIT	85,645	1.23%	IBEX Index	5,118	0.26%
CO1 Comdty	(89,512)	1.29%	NVS US Equity	5,123	0.26%
AU_TSY CREDIT	90,775	1.30%	MDY US Equity	5,127	0.26%
PSI20 Index	(94,327)	1.36%	WLP US Equity	5,199	0.26%
IBOV Index	94,594	1.36%	INTC US Equity	5,219	0.26%
US_TSY CREDIT	100,443	1.44%	AZN SS Equity	5,399	0.27%
GB_TSY CREDIT	108,101	1.55%	JNJ US Equity	5,568	0.28%
JP_TSY CREDIT	(120,012)	1.72%	MAERSKB DC Equity	5,606	0.28%
MX_TSY CREDIT	121,882	1.75%	SENSEX Index	5,711	0.29%
SG_TSY CREDIT	132,728	1.91%	CMCSK US Equity	5,834	0.29%
MY_TSY CREDIT	136,346	1.96%	AZN US Equity	5,901	0.30%
CA_TSY CREDIT	309,688	4.45%	XLF US Equity	5,966	0.30%
			AZN LN Equity	6,039	0.30%
			ROG VX Equity	6,130	0.31%
			BE_TSY CREDIT	6,349	0.32%
			NOVN VX Equity	6,604	0.33%
			HEX Index	7,429	0.37%
			PRU LN Equity	8,216	0.41%
			MDT US Equity	9,096	0.46%
			TMO US Equity	9,230	0.47%
			IT_TSY CREDIT	9,413	0.47%
			MMM US Equity	9,512	0.48%
			KFX Index	11,105	0.56%
			TYC US Equity	11,588	0.58%
			PSI20 Index	11,599	0.58%
			ES_TSY CREDIT	11,629	0.59%
			XLV US Equity	14,001	0.71%
			NDX Index	14,219	0.72%
			SPX Index	20,674	1.04%
			SXDP Index	26,230	1.32%
			IE_TSY CREDIT	33,344	1.68%
			STBCNZL Index	34,116	1.72%

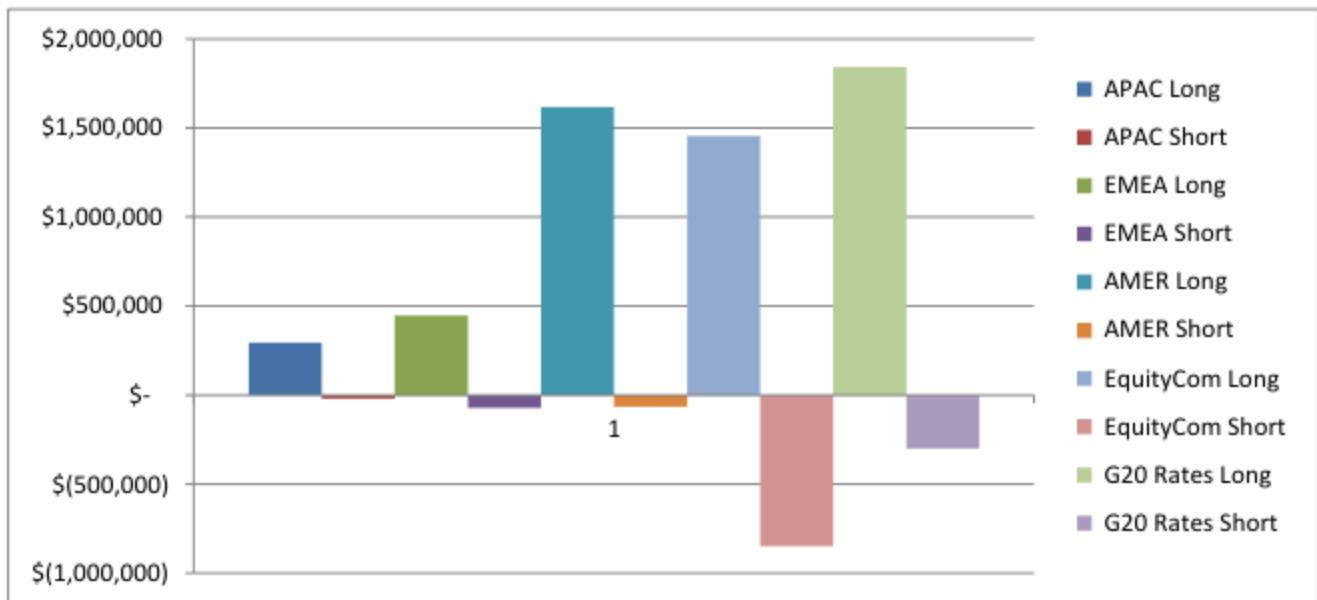
Day NAV Impact of MTM by Category & Exposure	
Listed Equity Long	0.355%
Listed Equity Short	-0.017%
EquityCom Long	0.262%
EquityCom Short	-0.001%
G20 Rates Long	0.068%
G20 Rates Short	0.061%

T12M Contribution (% of total Yr/Yr NAV Change by Category)	
Listed Equities	28.92%
EquityCom	60.81%
G20 Rates	12.93%

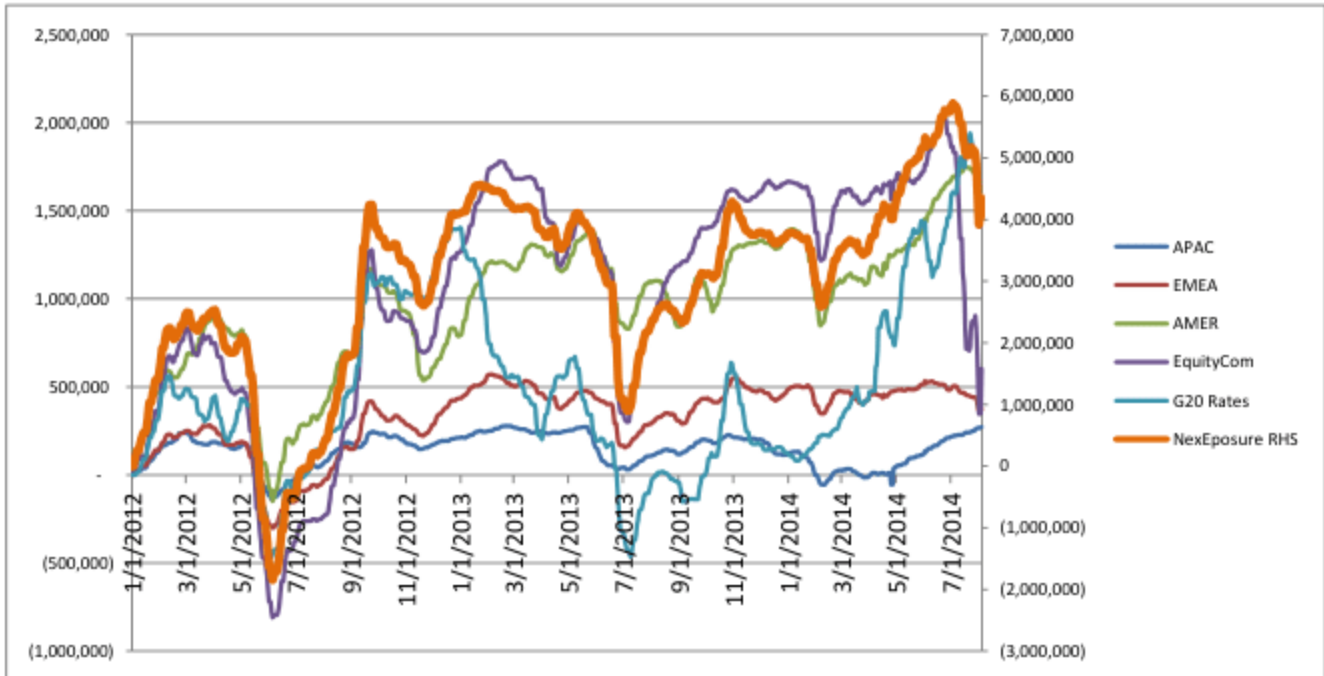
**No. Names by Category**

APAC Long	34
APAC Short	6
EMEA Long	53
EMEA Short	12
AMER Long	169
AMER Short	16
EquityCom Long	55
EquityCom Short	17
G20 Rates Long	19
G20 Rates Short	4
Total Long	330
Total Short	55

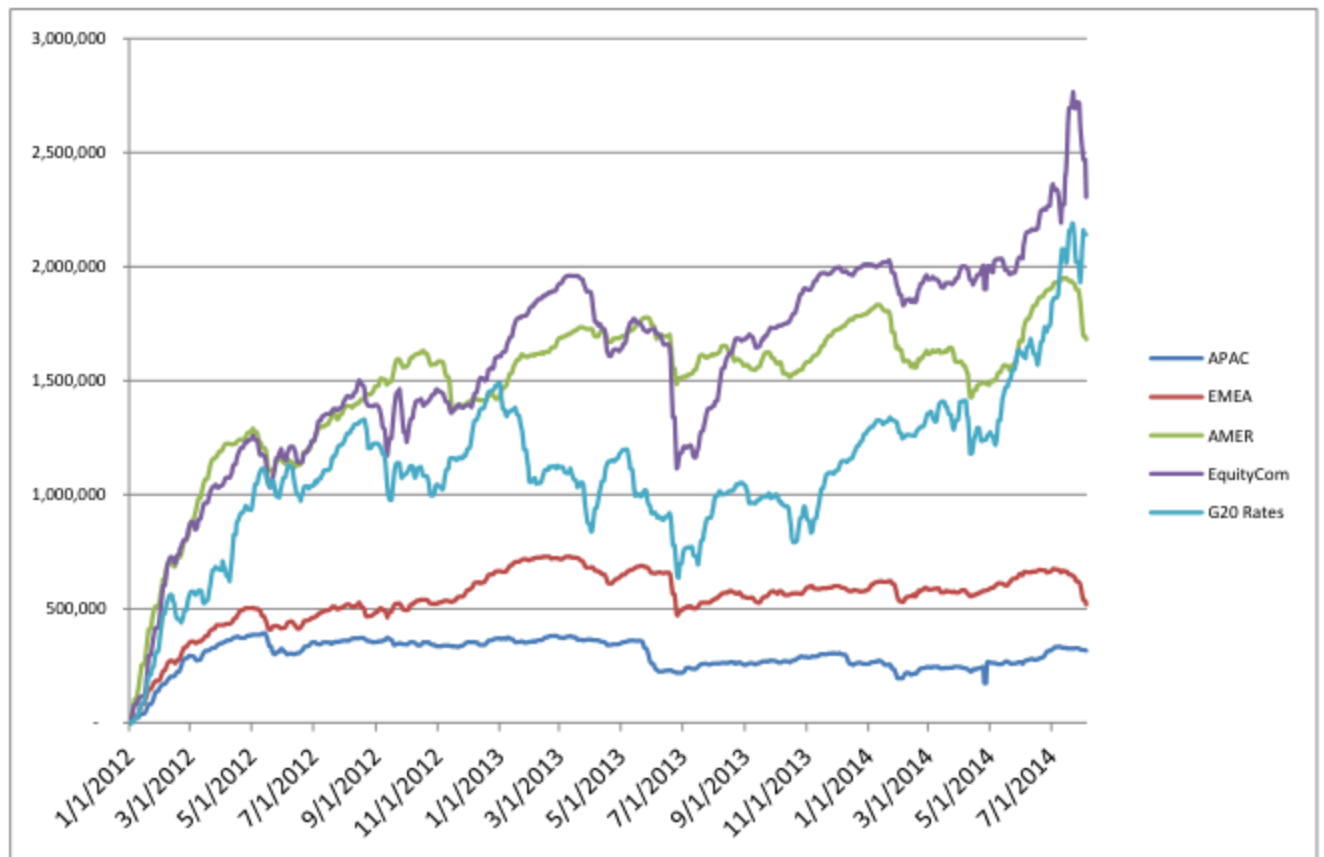
**Current Exposure by Geography (Listed Equities) & Macro (Equity Indices & Commodities, G20 Gov. Credit)**



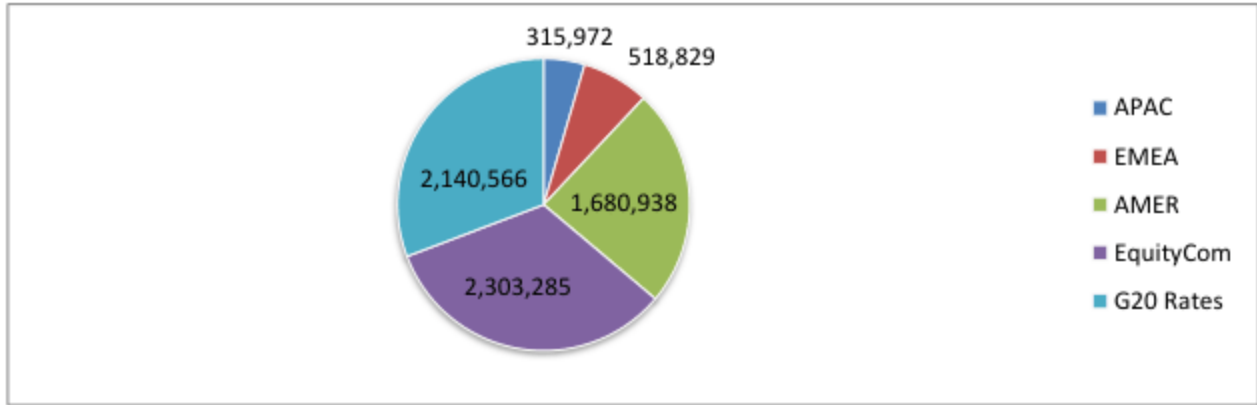
Historical Net Exposure by Geography (Listed Equities) & Macro (Equity Indices & Commodities, G20 Gov. Credit)



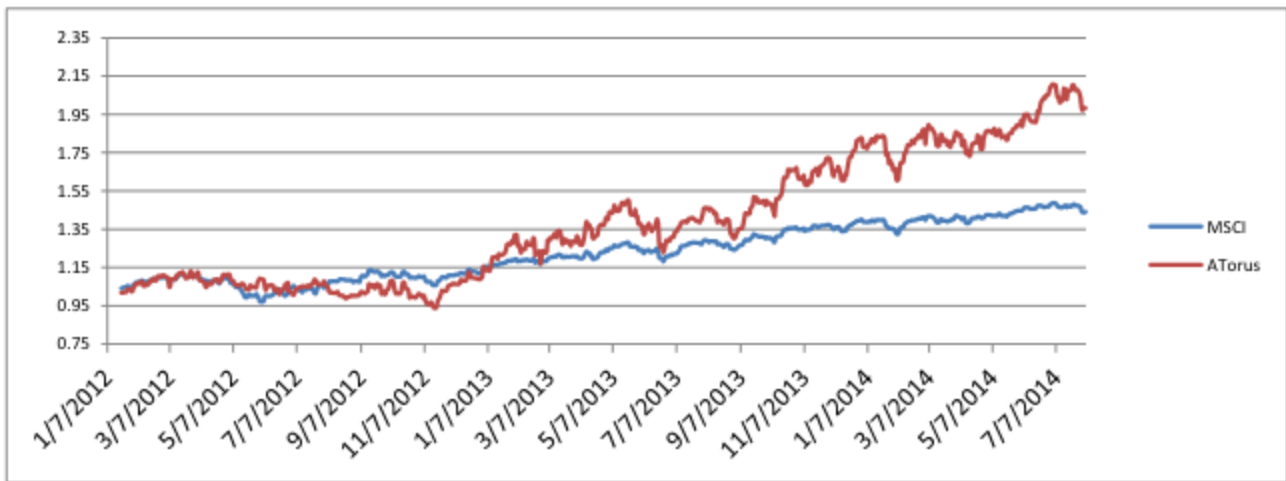
Historical Gross Exposure by Geography (Listed Equities) & Macro (Equity Indices & Commodities, G20 Gov. Credit)



**Current Gross Notional Risk by Category**



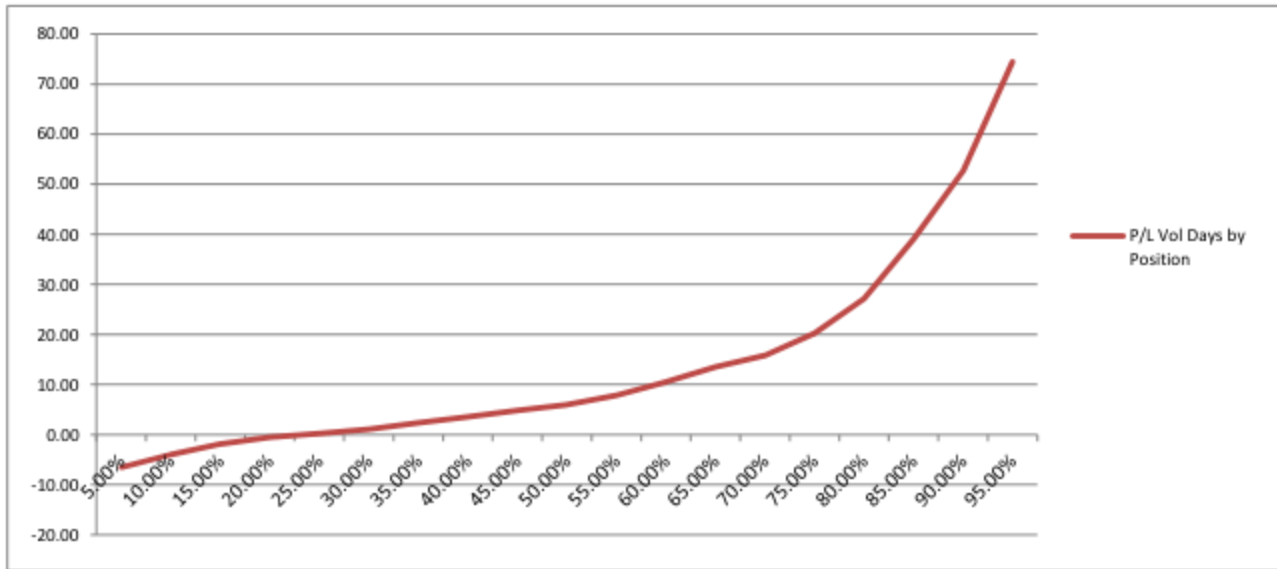
**Performance Vs. MSCI World Index**



**Rolling 30 Day Realized Volatility - Atorus**



**Percentile Distribution of Current MTM Gains in Vol Days by Position (ex-99pct & ex-1st percentiles)**



Percentile	No. Vol Days
0.00%	-11.07
5.00%	-6.52
10.00%	-3.99
15.00%	-1.84
20.00%	-0.53
25.00%	0.23
30.00%	1.08
35.00%	2.38
40.00%	3.59
45.00%	4.85
50.00%	5.98
55.00%	7.88
60.00%	10.55
65.00%	13.51
70.00%	15.82
75.00%	20.27
80.00%	27.17
85.00%	39.08
90.00%	52.69
95.00%	74.52
100.00%	205.67

MTM Gains(Losses) % of NAV "Significant" (<7 Vol Days)	1.58%
MTM Gains(Losses) % of NAV "Significant" (>7 Vol Days)	30.56%

## Current Portfolio -Listed Equity Portfolio

Security	MTM Gain/(Loss)	Exp. @ Cost	Avg. Price	Current Price (in USD)	P/L in Vol Days	30P Realized Vol	Change on Day (in USD)
000270 KS Equity	(0)	945	60.29	60.29	0.00	1.02%	29.90
005380 KS Equity	63	3,149	226.50	231.00	1.77	1.12%	(49.19)
005490 KS Equity				320.85			-
005930 KS Equity	157	(5,024)	1,305.89	1,265.13	3.28	0.95%	(3.95)
012330 KS Equity				293.98			-
1 HK Equity	1,824	14,064	16.37	18.49	14.11	0.92%	(230.36)
1299 HK Equity	1,005	9,733	4.91	5.42	17.38	0.59%	(61.28)
13 HK Equity	990	7,771	12.15	13.70	20.27	0.63%	(34.47)
16 HK Equity				14.75			-
27 HK Equity	(511)	(4,202)	7.46	8.36	-9.18	1.33%	(6.01)
2914 JP Equity	160	11,062	35.05	35.55	2.23	0.65%	91.84
3382 JP Equity	275	3,719	39.56	42.48	10.49	0.70%	7.38
4063 JP Equity	188	9,790	62.35	63.54	2.79	0.69%	(48.11)
4502 JP Equity	19	8,600	45.47	45.57	0.52	0.42%	(73.82)
4689 JP Equity	(180)	2,551	4.61	4.30	-5.87	1.20%	(24.60)
5 HK Equity				10.61			-
5108 JP Equity	3	7,634	36.08	36.09	0.05	0.95%	42.40
5401 JP Equity				3.02			-
6301 JP Equity	(5)	4,173	22.56	22.54	-0.17	0.78%	(5.98)
6752 JP Equity				12.16			-
6902 JP Equity				46.33			-
6954 JP Equity	712	7,571	160.05	175.10	11.80	0.80%	(32.37)
7201 JP Equity	186	5,116	9.48	9.83	4.20	0.86%	(65.65)
7203 JP Equity	(24)	1,971	59.88	59.17	-1.96	0.61%	(10.16)
7267 JP Equity	38	(2,226)	35.30	34.69	2.26	0.76%	-
762 HK Equity				1.76			145.39
7751 JP Equity	29	9,172	33.01	33.11	0.57	0.55%	(42.21)
8031 JP Equity	48	9,105	16.13	16.22	1.00	0.53%	38.50
8058 JP Equity	838	11,969	19.84	21.23	11.21	0.62%	-
8306 JP Equity				5.93			38.44
8316 JP Equity	(85)	(3,372)	39.96	40.97	-3.35	0.76%	(46.18)
8411 JP Equity	(312)	6,849	2.02	1.93	-10.47	0.43%	-
8604 JP Equity				6.37			(52.97)
8801 JP Equity	279	6,151	31.79	33.23	6.64	0.68%	
8802 JP Equity	83	(3,774)	24.87	24.33	2.44	0.90%	56.29
9020 JP Equity	144	7,840	78.94	80.39	2.53	0.73%	(40.00)
941 HK Equity				11.02			-
9432 JP Equity	1,940	11,412	56.36	65.93	20.57	0.83%	(149.87)
9433 JP Equity	93	9,967	58.51	59.06	1.03	0.90%	61.03
9437 JP Equity	170	6,364	17.25	17.71	3.69	0.72%	(11.01)
9983 JP Equity	(71)	(2,292)	322.77	332.83	-3.80	0.82%	12.00

9984 JP Equity	(270)	5,645	74.19	70.81	-5.87	0.81%	(167.79)
AAPL US Equity	2,084	10,665	80.12	95.78	26.20	0.75%	(4.24)
ABB US Equity				22.79			-
ABBN VX Equity	128	(7,476)	23.20	22.80	2.38	0.72%	
ABBV US Equity	107	6,570	52.10	52.95	1.85	0.88%	83.58
ABEV US Equity	314	(5,506)	7.24	6.83	6.38	0.89%	47.40
ABEV3 BZ Equity	310	(5,164)	7.31	6.87	6.11	0.98%	21.66
ABI BB Equity	198	12,645	105.88	107.53	3.12	0.50%	50.22
ABT US Equity	581	9,473	39.80	42.24	10.22	0.60%	32.81
ABX CN Equity	(8)	(5,037)		#N/A N/A	-0.20	0.83%	
ABX US Equity	32	(4,849)	18.17	18.05	0.77	0.85%	42.21
ACA FP Equity	4	(1,763)	13.79	13.76	0.17	1.25%	(40.24)
ACE US Equity	215	11,741	98.27	100.07	3.90	0.47%	(31.55)
ACN US Equity	117	8,563	77.97	79.03	3.23	0.42%	28.94
ADP US Equity	359	11,307	78.54	81.04	9.44	0.34%	(67.21)
AFL US Equity	(118)	2,045	62.26	58.87	-11.01	0.52%	(10.12)
AGN US Equity	4,687	10,917	114.88	164.19	54.75	0.78%	(100.02)
AI FP Equity	(32)	356	136.77	125.58	-11.07	0.81%	(1.57)
AIG US Equity	171	12,241	51.90	52.62	2.31	0.60%	149.00
AIR FP Equity	739	(6,344)	64.70	57.17	9.23	1.26%	5.42
ALV GR Equity	(232)	6,157	170.78	164.59	-5.83	0.64%	(23.73)
ALVG IX Equity	(195)	5,785	170.20	164.65	-5.17	0.65%	(21.16)
AMGN US Equity	1,023	11,752	117.64	127.88	9.19	0.95%	213.20
AMT US Equity	2,868	13,269	78.17	95.06	44.96	0.48%	60.59
AMZN US Equity	68	(4,254)	318.50	313.41	1.20	1.33%	(70.51)
ANZ AU Equity	576	13,493	29.84	31.11	8.53	0.50%	(45.75)
APA US Equity	1,334	12,393	91.83	101.72	12.34	0.87%	113.28
APC US Equity	583	6,564	100.97	109.94	7.59	1.17%	292.02
AXP US Equity	1,642	10,063	74.65	86.83	26.12	0.62%	42.92
AZN LN Equity	6,039	12,950	50.16	73.56	76.78	0.61%	238.28
AZN SS Equity	5,399	12,372	51.16	73.48	70.14	0.62%	181.93
AZN US Equity	5,901	13,079	50.64	73.49	67.25	0.67%	179.39
BA US Equity	(213)	8,241	123.26	120.16	-3.27	0.79%	(28.08)
BAC US Equity	9	1,452	14.96	15.05	0.61	0.96%	1.12
BARC LN Equity				3.79			-
BAS GR Equity				100.98			-
BATS LN Equity	447	9,427	55.12	57.73	7.11	0.67%	(52.74)
BAX US Equity	(34)	8,474	74.80	74.50	-0.77	0.52%	(67.56)
BAYN GR Equity	(464)	6,607	136.68	127.71	-8.17	0.86%	(91.96)
BBAS3 BZ Equity				12.09			-
BBD US Equity	319	5,475	14.62	15.47	4.87	1.20%	24.60
BBDC4 BZ Equity	308	5,427	14.64	15.47	4.60	1.23%	27.90
BBL US Equity				68.08			-
BBVA SM Equity	687	3,825	10.30	12.16	18.77	0.96%	(20.07)
BCE CN Equity	11	10,241		#N/A N/A	0.21	0.50%	
BCS US Equity				15.17			-
BEN US Equity	(121)	6,278	54.90	53.86	-2.90	0.66%	2.32

BG/ LN Equity	(5)	(5,450)	20.62	20.63	-0.08	1.02%	(141.95)
BHP AU Equity	312	11,120	34.69	35.66	4.32	0.65%	(5.80)
BHP US Equity	363	9,032	68.75	71.51	5.07	0.79%	77.80
BIIB US Equity	355	1,066	245.93	327.95	27.31	1.22%	(9.85)
BIL SJ Equity				33.88			-
BK US Equity	1,784	11,358	33.73	39.03	21.61	0.73%	56.81
BLK US Equity	(76)	7,520	307.78	304.70	-1.52	0.67%	7.72
BLT LN Equity				33.95			-
BMO CN Equity	1,396	17,075		#N/A N/A	17.39	0.47%	
BMW GR Equity	392	2,465	102.66	118.98	16.73	0.95%	24.19
BMY US Equity				49.98			-
BN FP Equity				72.41			-
BNP FP Equity	113	(5,794)	68.94	67.59	2.09	0.93%	(68.88)
BNS CN Equity	1,869	15,655		#N/A N/A	28.39	0.42%	
BP/ LN Equity	369	12,727	7.94	8.17	4.36	0.66%	98.57
BRK/B US Equity	1,022	15,815	121.19	129.02	15.72	0.41%	414.68
BSBR US Equity	(19)	5,698	6.81	6.79	-0.33	0.99%	21.58
BUD US Equity	259	11,940	105.71	108.01	3.58	0.61%	125.54
BX US Equity	44	6,625	32.52	32.73	0.59	1.13%	42.17
C US Equity	34	6,595	48.07	48.32	0.66	0.78%	5.23
CA FP Equity				35.01			-
CAT US Equity	664	6,520	92.03	101.40	13.38	0.76%	82.39
CBA AU Equity	1,785	19,541	70.58	77.02	22.67	0.40%	(11.40)
CBS US Equity	(224)	4,372	60.58	57.62	-4.81	1.07%	35.44
CCL US Equity				36.25			-
CELG US Equity	9	(828)	88.50	87.52	0.40	2.76%	(6.27)
CFR VX Equity	(331)	6,580	99.21	94.45	-8.01	0.63%	
CL US Equity	498	9,474	60.64	63.82	10.65	0.49%	(59.75)
CM CN Equity	1,086	13,918		#N/A N/A	17.31	0.45%	
CMCSA US Equity	502	11,232	51.48	53.78	5.33	0.84%	69.44
CMCSK US Equity	5,834	15,946	39.22	53.56	46.97	0.78%	104.43
CNI US Equity	3,915	14,430	52.31	66.51	44.17	0.61%	42.80
CNQ CN Equity	1,532	12,999		#N/A N/A	13.47	0.87%	
CNR CN Equity	3,873	14,238		#N/A N/A	43.09	0.63%	
COF US Equity	1,137	9,398	71.32	79.96	20.41	0.59%	67.75
COP US Equity	476	12,885	78.45	81.35	5.22	0.71%	88.24
COST US Equity	325	12,643	114.93	117.89	6.48	0.40%	(7.04)
COV LN Equity				#N/A N/A			
COV US Equity	2,757	8,082	65.33	87.61	75.29	0.45%	123.08
CRM US Equity	10	3,835	54.50	54.64	0.23	1.12%	76.47
CS FP Equity	(2)	436	24.09	24.00	-0.37	0.97%	9.58
CSCO US Equity	87	13,232	24.93	25.09	1.33	0.50%	65.73
CSX US Equity	1,571	10,803	25.81	29.57	32.30	0.45%	(27.02)
CVE CN Equity				#N/A N/A			
CVS US Equity	2,406	12,841	64.88	77.04	39.09	0.48%	75.20
CVX US Equity	(204)	8,549	130.41	127.37	-3.80	0.63%	(45.57)
D US Equity	307	3,181	60.80	66.66	13.97	0.69%	(61.12)

DAI GR Equity				82.24				-
DBK GR Equity	1,297	(8,131)	40.11	33.71	15.41	1.03%		71.65
DD US Equity				64.35				-
DDAIF US Equity				82.45				-
DE US Equity				85.04				-
DELL US Equity				#N/A	#N/A			
DG FP Equity				64.95				-
DGE LN Equity	(29)	616	31.16	29.78	-7.94	0.58%		0.27
DHR US Equity	(482)	11,611	76.71	73.65	-6.70	0.62%		38.74
DIS US Equity	2,777	12,485	71.06	86.87	39.55	0.56%		242.87
DISCA US Equity				84.18				-
DNB NO Equity	(135)	8,725	17.95	17.68	-1.94	0.80%		24.47
DOW US Equity	2,846	7,396	37.11	51.39	56.87	0.68%		100.22
DPW GR Equity				31.35				-
DTE GR Equity	262	10,164	15.65	16.05	3.56	0.72%		(231.64)
DTV US Equity	4,086	11,097	62.68	85.76	125.89	0.29%		(44.06)
DUK US Equity	14	(4,546)	72.07	71.84	0.46	0.68%		72.91
DVN US Equity	2,246	15,383	66.44	76.14	20.57	0.71%		269.66
EBAY US Equity	(164)	(3,128)	50.12	52.75	-8.03	0.65%		(11.40)
ECL US Equity	313	11,898	106.13	108.92	5.33	0.49%		80.01
EDF FP Equity				32.78				-
EMC US Equity	1,902	12,257	25.48	29.44	21.43	0.72%		192.54
EMR US Equity	(81)	1,748	66.65	63.69	-7.51	0.62%		12.23
ENB CN Equity	968	12,532		#N/A	#N/A	12.68	0.61%	
ENEL IM Equity	2,271	8,902	4.48	5.63	32.49	0.79%		(41.74)
ENI IM Equity	352	13,637	24.69	25.32	3.75	0.69%		(91.87)
EOAN GR Equity	(332)	5,700	19.38	18.31	-6.55	0.89%		(44.94)
EOG US Equity	3,030	5,841	72.84	110.63	57.63	0.90%		167.70
EPD US Equity	2,262	14,612	64.66	74.67	21.28	0.73%		322.37
ERICB SS Equity				12.32				-
ESRX US Equity				70.75				-
ETN US Equity	-	887	67.55	67.55	0.00	1.08%		1.93
F US Equity	(40)	11,031	17.09	17.03	-0.49	0.74%		103.64
FB US Equity	1,749	2,630	44.06	73.36	46.41	1.43%		58.59
FCX US Equity	643	8,796	34.61	37.14	7.88	0.93%		85.42
FDX US Equity	610	6,811	136.00	148.17	15.89	0.56%		66.95
FOX US Equity	(460)	8,704	33.26	31.59	-6.92	0.76%		(70.43)
FOXA US Equity	(213)	2,993	34.02	31.75	-8.25	0.86%		(14.75)
FP FP Equity	153	6,263	63.30	64.85	2.64	0.93%		5.06
G IM Equity				21.18				-
GE US Equity				25.22				-
GILD US Equity	1,055	7,021	80.25	92.31	13.70	1.10%		71.51
GIS US Equity	48	10,129	50.89	51.13	0.85	0.56%		54.27
GLE FP Equity				49.82				-
GLEN LN Equity				6.07				-
GLW US Equity	-	1,057	19.96	19.96	0.00	0.91%		8.24
GM US Equity	(518)	8,989	35.68	33.74	-6.60	0.87%		35.78

GOOG US Equity	155	8,672	561.32	571.35	2.39	0.75%	57.47
GS US Equity	423	11,132	164.80	171.07	5.72	0.66%	19.83
GSK LN Equity				24.14			-
GSZ FP Equity	(23)	2,066	25.61	25.34	-1.41	0.78%	(3.14)
HAL US Equity	2,697	8,652	53.00	69.52	33.34	0.93%	184.90
HD US Equity	427	17,619	78.01	79.90	5.45	0.44%	(49.69)
HMB SS Equity	(181)	4,005	42.44	40.61	-8.25	0.55%	(27.79)
HON US Equity	4,702	9,544	61.10	91.20	90.39	0.54%	(60.96)
HPQ US Equity	2,902	8,313	26.16	35.29	50.87	0.69%	53.68
HSBA LN Equity	294	8,008	10.34	10.72	5.39	0.68%	93.15
IBE SM Equity	2,546	7,531	5.56	7.44	59.04	0.57%	68.86
IBM US Equity	(60)	(4,369)	186.82	189.37	-2.09	0.65%	3.64
IMT LN Equity	2,081	14,380	37.31	42.71	15.52	0.93%	18.17
INTC US Equity	5,219	14,613	24.95	33.86	48.46	0.74%	50.97
ISP IM Equity				3.07			-
ITUB US Equity	(125)	5,715	15.87	15.53	-1.83	1.19%	60.21
ITUB4 BZ Equity	(74)	4,601	15.78	15.54	-1.30	1.23%	48.42
ITW US Equity	3,027	14,011	67.84	82.49	44.90	0.48%	74.14
ITX SM Equity				28.57			-
JCI US Equity	(282)	7,794	49.30	47.58	-4.55	0.80%	135.85
JNJ US Equity	5,568	20,338	78.39	99.86	61.48	0.45%	(1.76)
JPM US Equity	63	10,159	56.23	56.58	0.87	0.72%	(6.07)
KMB US Equity				105.10			-
KMI US Equity				36.01			-
KO US Equity	(456)	9,510	41.21	39.32	-10.48	0.46%	1.22
LBTYA US Equity	(264)	5,724	43.83	41.90	-6.37	0.72%	16.14
LBTYK US Equity	(284)	7,489	41.85	40.32	-5.68	0.67%	30.09
LIN GR Equity	(307)	10,343	202.73	196.88	-4.23	0.70%	(167.04)
LLOY LN Equity	26	2,144	1.23	1.24	1.42	0.86%	11.41
LLY US Equity	134	7,690	60.25	61.30	2.97	0.59%	90.42
LMT US Equity	248	6,055	161.27	167.86	6.74	0.61%	13.90
LNKD US Equity				202.41			-
LOW US Equity	83	7,548	47.35	47.87	2.09	0.53%	47.63
LVS US Equity	(36)	3,103	73.88	73.03	-1.35	0.87%	7.97
LYB US Equity	1,872	2,297	59.29	107.61	102.00	0.80%	43.79
MA US Equity	18	6,084	75.27	75.48	0.35	0.82%	61.29
MAERSKB DC Equity	5,606	14,377	1,651.64	2,295.69	59.86	0.65%	23.24
MC FP Equity				171.34			-
MCD US Equity				93.96			-
MCK US Equity	381	2,181	164.92	193.71	30.21	0.58%	(5.36)
MDLZ US Equity	3,660	13,763	28.74	36.39	44.95	0.59%	58.81
MDT US Equity	9,096	20,811	43.22	62.11	93.03	0.47%	305.70
MET US Equity	1,312	7,798	44.64	52.15	26.23	0.64%	(1.76)
MFC CN Equity	1,652	5,260		#N/A N/A	53.20	0.59%	
MHS US Equity				#N/A N/A			
MMM US Equity	9,512	21,331	96.89	140.10	107.66	0.41%	(4.58)
MO US Equity	1,187	13,316	37.33	40.66	13.80	0.65%	36.12

MON US Equity	856	12,758	106.90	114.07	9.07	0.74%	86.74
MOS US Equity				46.56			-
MRK US Equity	1,516	13,912	51.28	56.86	17.74	0.61%	29.30
MS US Equity	69	5,272	31.36	31.77	1.58	0.83%	3.25
MSFT US Equity	1,846	9,448	36.13	43.20	28.93	0.68%	68.63
MUV2 GR Equity	128	2,446	197.70	208.07	7.60	0.69%	(17.56)
NAB AU Equity	305	10,650	31.52	32.42	5.98	0.48%	(9.28)
NCM AU Equity				10.09			-
NEE US Equity	1,649	6,110	73.39	93.19	43.00	0.63%	(80.47)
NEM US Equity	(1)	(605)	25.47	25.50	-0.12	1.01%	(9.78)
NESN VX Equity	243	7,469	71.26	73.58	7.14	0.46%	
NG/ LN Equity	2,496	13,901	12.07	14.24	31.04	0.58%	63.70
NKE US Equity	407	5,145	71.37	77.02	10.05	0.79%	14.93
NOK US Equity	4,419	4,498	3.96	7.86	85.50	1.15%	10.34
NOV US Equity	338	12,775	80.09	82.21	3.88	0.68%	208.52
NOVN VX Equity	6,604	22,187	67.19	87.18	71.40	0.42%	
NOVOB DC Equity	1,123	12,542	41.61	45.34	15.04	0.60%	19.11
NSC US Equity	2,443	10,834	82.27	100.83	31.52	0.72%	(40.02)
NVS US Equity	5,123	18,466	68.02	86.88	61.67	0.45%	(10.58)
OGXP3 BZ Equity	4,031	(4,107)	4.39	0.08	92.83	1.06%	(80.47)
OR FP Equity	(144)	11,677	168.94	166.87	-2.56	0.48%	(14.41)
ORA FP Equity	1,019	8,559	13.80	15.45	15.04	0.79%	34.48
ORCL US Equity	1,451	9,129	34.50	39.99	26.66	0.60%	28.31
OXY US Equity	389	10,929	96.82	100.27	5.21	0.68%	259.09
PBR US Equity	(96)	4,517	16.29	15.95	-1.48	1.43%	54.21
PBR/A US Equity	(108)	4,034	17.38	16.92	-1.86	1.45%	34.28
PCLN US Equity	498	6,424	1,190.29	1,282.65	10.15	0.76%	205.33
PCP US Equity				229.00			-
PEP US Equity	850	14,142	84.13	89.19	11.19	0.54%	141.21
PETR3 BZ Equity				7.96			-
PETR4 BZ Equity				8.46			-
PFE US Equity	(66)	1,684	29.86	28.74	-6.22	0.63%	(8.92)
PG US Equity	(10)	3,524	79.25	79.03	-0.53	0.53%	(42.41)
PHIA NA Equity				30.92			-
PM US Equity	(410)	6,694	86.96	81.95	-8.38	0.73%	(12.50)
PNC US Equity	207	4,305	78.28	82.05	7.88	0.61%	(7.83)
POT CN Equity	(434)	9,967		#N/A N/A	-7.03	0.62%	
POT US Equity	(486)	10,582	36.67	35.06	-7.64	0.60%	(2.04)
PRU LN Equity	8,216	10,521	12.76	22.73	104.79	0.75%	35.76
PSA US Equity	845	14,244	162.78	172.44	17.05	0.35%	(30.10)
PSX US Equity	1,546	6,695	66.16	81.44	28.77	0.80%	112.26
PX US Equity	-	1,282	128.59	128.59	0.00	0.37%	3.70
QCOM US Equity				73.20			-
QQQ US Equity	3,400	18,032	80.07	95.16	39.43	0.48%	116.25
RAI US Equity	413	12,340	54.05	55.86	3.18	1.05%	12.66
RDS/A US Equity	989	12,883	75.73	81.54	13.54	0.57%	46.45
RDS/B US Equity	1,006	11,427	78.85	85.79	13.03	0.68%	46.16

RDSA LN Equity	1,042	12,402	37.55	40.70	16.50	0.51%	14.71
RDSA NA Equity	843	12,492	38.08	40.66	12.79	0.53%	(42.70)
RDSB LN Equity	1,033	12,149	39.49	42.84	15.83	0.54%	42.94
REGN US Equity				325.47			-
RIO AU Equity	515	9,608	57.78	60.87	6.83	0.79%	13.79
RIO LN Equity	224	4,819	54.31	56.83	4.36	1.06%	63.91
RIO US Equity	263	4,934	54.34	57.24	5.10	1.04%	52.76
ROG VX Equity	6,130	17,035	212.78	289.35	65.17	0.55%	
RY CN Equity	1,246	15,531		#N/A N/A	17.25	0.46%	
SAB LN Equity	929	13,023	50.36	53.95	8.88	0.80%	(1.68)
SAN FP Equity	111	5,571	104.49	106.57	3.60	0.55%	16.62
SAN SM Equity	1,401	9,880	8.73	9.97	15.69	0.90%	(25.62)
SAN US Equity	1,088	7,980	8.73	9.92	12.59	1.08%	(0.18)
SAP GR Equity	(54)	8,587	77.21	76.72	-0.84	0.74%	(104.45)
SAP US Equity	(41)	8,173	77.22	76.83	-0.67	0.76%	(79.31)
SBUX US Equity	543	15,938	74.92	77.47	5.74	0.59%	87.86
SGO FP Equity				48.33			-
SI US Equity				#N/A N/A			
SIE GR Equity				120.94			-
SLB US Equity	2,617	10,752	87.56	108.87	29.17	0.83%	108.69
SMSN LI Equity	115	(4,831)	650.18	634.66	2.21	1.08%	(81.90)
SO US Equity	(273)	9,489	44.08	42.84	-4.68	0.62%	(125.73)
SPG US Equity	(58)	12,778	168.98	168.21	-1.27	0.36%	3.34
SREN VX Equity				84.66			
STAN LN Equity	261	(7,339)	21.38	20.62	4.67	0.76%	(7.27)
STL NO Equity	942	11,818	26.89	29.03	11.49	0.69%	129.99
STT US Equity	500	8,981	66.55	70.26	8.85	0.63%	26.77
SU CN Equity	723	14,944		#N/A N/A	5.73	0.84%	
SU FP Equity	(105)	2,037	87.41	83.12	-5.10	1.01%	(18.09)
SU US Equity	832	15,335	38.21	40.28	6.47	0.84%	138.69
SWEDA SS Equity	(56)	3,525	25.78	25.38	-2.39	0.67%	(19.64)
SYNN VX Equity	178	(6,953)	364.98	355.64	3.11	0.82%	
T US Equity	20	(4,666)	35.52	35.37	0.71	0.61%	15.05
TD CN Equity	1,594	16,822		#N/A N/A	24.12	0.39%	
TEF SM Equity	(137)	9,929	16.31	16.09	-2.40	0.57%	(88.01)
TEF US Equity	(92)	8,452	16.22	16.05	-1.54	0.71%	(49.10)
TGT US Equity	306	(7,431)	63.18	60.58	6.40	0.64%	(116.92)
TJX US Equity	38	(4,997)	53.94	53.53	1.06	0.72%	(37.54)
TLS AU Equity	1,195	17,571	4.75	5.07	16.80	0.40%	12.23
TLSN SS Equity				7.46			-
TM US Equity	(31)	2,238	119.59	117.97	-2.54	0.54%	5.09
TMO US Equity	9,230	10,218	63.59	121.03	174.00	0.52%	(80.38)
TOT US Equity	186	3,264	61.65	65.15	5.34	1.06%	26.45
TRP CN Equity	102	12,878		#N/A N/A	1.14	0.69%	
TRV US Equity	264	16,116	88.20	89.65	3.01	0.54%	(7.41)
TSCO LN Equity	1,644	(7,272)	5.49	4.25	20.29	1.11%	73.28
TWC US Equity	1,166	5,234	120.22	147.00	26.69	0.83%	39.19

TWX US Equity	2,536	11,604	70.04	85.34	15.78	1.39%	286.12
TXN US Equity	3,981	12,205	34.93	46.32	60.22	0.54%	12.31
TYC US Equity	11,588	24,080	29.17	43.20	78.53	0.61%	236.69
UBS US Equity				17.11			-
UBSN VX Equity	566	(6,223)	18.79	17.08	10.92	0.83%	
UCG IM Equity				7.98			-
ULVR LN Equity	(43)	7,646	43.35	43.11	-0.93	0.60%	(7.63)
UNA NA Equity	(245)	6,840	42.27	40.81	-5.32	0.67%	(61.01)
UNH US Equity	2,816	10,929	65.20	82.00	30.51	0.84%	92.71
UNP US Equity	2,188	14,872	85.39	97.96	30.78	0.48%	(55.15)
UPS US Equity	1,896	8,884	79.87	96.91	38.06	0.56%	2.70
USB US Equity	2,772	14,625	34.87	41.48	36.29	0.52%	(14.75)
UTX US Equity				104.93			-
V US Equity	248	12,503	208.25	212.38	2.94	0.67%	40.45
VALE US Equity	23	(1,063)	14.41	14.10	2.01	1.07%	(0.13)
VALE3 BZ Equity				14.08			-
VIAB US Equity	2,005	5,848	61.33	82.35	51.04	0.67%	(4.30)
VIV FP Equity				25.31			-
VMW US Equity	574	4,886	89.33	99.81	11.76	1.00%	57.35
VOD LN Equity	517	(4,209)	3.78	3.32	8.68	1.41%	(16.59)
VOD US Equity	493	(4,063)	37.68	33.10	14.66	0.83%	(21.57)
VOW3 GR Equity				232.49			-
VRX CN Equity	(91)	1,813		#N/A N/A	-4.03	1.24%	
VRX US Equity	(77)	1,283	124.01	116.98	-5.44	1.11%	(13.22)
VTI US Equity	764	5,134	86.91	99.84	39.92	0.37%	17.93
VWO US Equity	245	9,852	43.24	44.31	4.69	0.53%	94.92
VZ US Equity				49.96			-
WBC AU Equity	203	10,131	30.94	31.56	4.07	0.49%	(47.52)
WES AU Equity	425	15,919	39.35	40.41	5.20	0.51%	30.80
WFC US Equity	3,645	13,326	39.91	50.82	56.47	0.48%	91.35
WLP US Equity	5,199	12,743	78.92	111.11	51.45	0.79%	59.39
WMT US Equity	(72)	1,852	76.20	73.35	-9.76	0.40%	(6.27)
WOW AU Equity	(106)	4,724	34.81	34.05	-4.29	0.52%	14.00
XOM US Equity	1,244	16,573	92.53	99.47	10.63	0.71%	114.43
XTA LN Equity				#N/A N/A			
YHOO US Equity	104	2,439	34.76	36.24	3.04	1.40%	45.02
YUM US Equity				70.60			-
ZURN VX Equity	(179)	9,344	295.39	289.85	-3.57	0.54%	

#### Current Portfolio - Global Macro Portfolio

Security	MTM Gain/(Loss)	Exp. @ Cost	Avg. Price	Current Price (in USD)	P/L in Vol Days	30P Realized Vol	Change on Day (in USD)
SPX Index	20,674	62,272	1,455.70	1,938.99	75.80	0.44%	596.30
NDX Index	14,219	38,177	2,848.04	3,908.77	65.77	0.57%	393.00
RTY Index	(142)	18,515	1,133.44	1,124.82	-1.04	0.74%	164.20

SPTSX Index	2,866	48,100		#N/A N/A	12.26	0.49%	
MEXBOL Index	318	26,362	3,337.29	3,377.59	2.26	0.53%	402.32
IBOV Index	(1,278)	94,594	25,346.07	25,008.32	-1.47	0.92%	1,295.31
MERVAL Index	2,237	22,139	915.40	1,007.89	4.28	2.36%	(78.97)
UKX Index	3,526	49,421	10,501.74	11,250.95	14.48	0.49%	34.01
DAX Index	902	6,121	10,704.86	12,282.11	18.38	0.80%	(49.93)
CAC Index	2,155	(62,017)	5,861.93	5,658.24	4.31	0.81%	(153.37)
IBEX Index	5,118	25,904	11,759.39	14,082.75	27.14	0.73%	(84.80)
SMI Index	911	10,740	8,442.28	9,158.53	16.70	0.51%	
FTSEMIB Index	24	1,404	26,886.83	27,345.71	1.60	1.06%	(0.16)
PSI20 Index	11,599	(94,327)	8,956.04	7,854.79	8.55	1.44%	(924.26)
ISEQ Index	2,138	(59,652)	6,404.62	6,175.04	5.82	0.62%	230.94
ICEXI Index	706	47,263		#N/A N/A	2.57	0.58%	
AEX Index	458	5,819	492.48	531.25	13.09	0.60%	(47.61)
BEL20 Index	-	17,092	4,108.89	4,108.89	0.00	0.58%	(6.88)
LUXXX Index	3,963	16,653	1,672.08	2,070.03	39.08	0.61%	136.51
KFX Index	11,105	40,987	102.53	130.31	49.69	0.55%	(16.97)
HEX Index	7,429	45,041	8,658.69	10,086.91	27.43	0.60%	119.21
OMX Index	(111)	3,094	204.73	197.65	-5.21	0.69%	(11.60)
ATX Index	2,770	(44,635)	3,249.93	3,048.22	8.17	0.76%	231.72
ASE Index	(150)	3,427	1,618.88	1,551.09	-3.92	1.11%	(22.64)
OSEBX Index	3,245	29,902	87.49	96.99	16.13	0.67%	81.59
INDEXCF Index	1,663	(61,017)	39.56	38.49	2.16	1.26%	(117.61)
TOP40 Index	2,704	44,616	4,057.53	4,303.44	9.76	0.62%	391.19
SENSEX Index	5,711	49,159	377.78	421.66	15.20	0.76%	524.07
NKY Index	1,149	31,805	145.72	150.99	8.07	0.45%	(116.02)
HSI Index	3,555	48,854	2,958.87	3,174.16	13.61	0.53%	143.84
SHCOMP Index	491	46,321	356.06	359.84	1.87	0.57%	811.54
KOSPI Index	3,160	45,441	1.88	2.01	14.49	0.48%	182.88
AS51 Index	1,417	39,851	4,991.54	5,169.08	8.80	0.40%	(17.82)
STBCNZL Index	34,116	73,207	444.47	651.60	133.90	0.35%	(519.59)
EEM US Equity	20	9,973	44.38	44.47	0.35	0.57%	92.99
IYR US Equity	274	15,110	70.72	72.00	4.88	0.37%	92.43
MDY US Equity	5,127	14,269	184.03	250.15	70.95	0.51%	100.54
JNK US Equity	(5)	(733)	40.27	40.54	-3.10	0.22%	(4.88)
XLF US Equity	5,966	13,610	15.57	22.40	82.57	0.53%	158.59
XLU US Equity	311	7,097	39.46	41.19	6.16	0.71%	(40.25)
XLK US Equity	3,461	13,272	30.99	39.07	51.92	0.50%	119.06
XLI US Equity	4,653	12,917	38.20	51.96	67.22	0.54%	61.08
XLP US Equity	405	13,034	42.30	43.61	7.19	0.43%	43.28
XLY US Equity	1,427	12,582	59.54	66.29	20.18	0.56%	136.57
XLE US Equity	1,219	14,589	89.95	97.46	12.47	0.67%	265.53
XLB US Equity	4,651	15,233	37.75	49.27	67.86	0.45%	236.86
XLV US Equity	14,001	24,346	38.87	61.22	100.30	0.57%	163.55
SXXP Index	893	9,808	407.21	444.30	15.60	0.58%	(35.63)
SXAP Index	47	(18,597)	637.15	635.55	0.29	0.86%	(67.07)
SXKP Index	209	5,722	378.31	392.14	6.31	0.58%	(30.61)

SX6P Index	3,719	23,702	360.60	417.19	24.97	0.63%	43.85
SXEP Index	1,226	55,125	460.42	470.65	3.25	0.68%	192.72
SXIP Index	2,061	5,785	222.31	301.51	59.04	0.60%	(4.34)
SXNP Index	2,696	(62,472)	546.98	523.37	6.48	0.67%	396.70
SX3P Index	(40)	20,188	682.29	680.94	-0.39	0.51%	(172.14)
SXDP Index	26,230	61,074	609.16	870.78	120.34	0.36%	(316.18)
SX4P Index	187	6,237	939.56	967.77	3.63	0.83%	(74.22)
SX8P Index	(38)	9,102	376.45	374.87	-0.54	0.78%	(99.92)
SXOP Index	3,766	(69,139)	457.93	432.99	6.88	0.79%	242.60
SXQP Index	(663)	19,185	807.73	780.76	-5.54	0.62%	(156.91)
SXRP Index	3,668	(80,697)	417.42	398.44	7.57	0.60%	305.89
SXMP Index	(494)	16,248	334.97	325.08	-4.76	0.64%	(81.75)
SXTP Index	1,712	(60,334)	258.39	251.06	4.54	0.62%	570.62
SX7E Index	232	(24,325)	193.46	191.62	0.80	1.18%	(91.76)
SX5E Index	126	(21,062)	4,144.46	4,119.64	0.74	0.81%	36.62
SPGSCITR Index	-	17,092	4,823.59	4,823.59	0.00	0.46%	75.63
XAG Curncy	284	(7,608)	20.95	20.16	5.46	0.68%	63.75
CO1 Comdty	2,290	(89,512)	108.18	105.41	3.89	0.66%	(499.11)
CL1 Comdty	(306)	14,592	100.35	98.29	-2.99	0.70%	59.84
NG1 Comdty	2,106	(61,837)	3.97	3.83	2.49	1.37%	(606.09)
XAU Comdty	(174)	(31,099)	97.76	98.31	-1.10	0.51%	366.78
IBOXHY Index	1,817	32,051	220.12	232.60	46.42	0.12%	69.11
US_TSY CREDIT	692	100,443	765.33	770.60	5.56	0.12%	56.47
CA_TSY CREDIT	(1,649)	309,688	1,238.01	1,231.45	-2.30	0.23%	(526.90)
MX_TSY CREDIT	(702)	121,882	222.97	221.69	-2.05	0.28%	(337.96)
AU_TSY CREDIT	2,609	90,775	1,512.22	1,555.69	11.41	0.25%	97.95
JP_TSY CREDIT	(314)	(120,012)	814.94	817.07	-1.26	0.21%	(51.30)
MY_TSY CREDIT	2,310	136,346	171.16	174.06	8.03	0.21%	559.87
SG_TSY CREDIT	1,019	132,728	223.14	224.85	4.79	0.16%	447.61
AT_TSY CREDIT	4,636	82,197	358.55	378.77	26.67	0.21%	-
BE_TSY CREDIT	6,349	81,103	478.32	515.77	36.25	0.22%	13.57
FI_TSY CREDIT	3,827	85,645	349.64	365.27	22.18	0.20%	41.66
FR_TSY CREDIT	5,055	82,246	1,684.51	1,788.04	29.39	0.21%	(4.39)
DE_TSY CREDIT	2,861	84,524	1,247.55	1,289.78	16.22	0.21%	(12.87)
IE_TSY CREDIT	33,344	78,270	336.92	480.46	205.67	0.21%	127.91
IT_TSY CREDIT	9,413	54,986	1,616.07	1,892.73	81.23	0.21%	187.34
NL_TSY CREDIT	4,071	83,503	1,331.40	1,396.30	23.56	0.21%	(33.23)
ES_TSY CREDIT	11,629	50,187	392.28	483.18	110.86	0.21%	188.64
DK_TSY CREDIT	3,110	71,590	731.06	762.82	20.19	0.22%	18.61
NO_TSY CREDIT	(175)	(70,342)	337.10	337.94	-1.01	0.25%	(41.55)
PL_TSY CREDIT	1,660	35,151	429.04	449.30	14.21	0.33%	264.05
ZA_TSY CREDIT	(234)	(53,607)	84.71	85.08	-0.94	0.46%	50.14
SE_TSY CREDIT	920	(55,965)	462.46	454.86	5.45	0.30%	1,258.42
CH_TSY CREDIT	-	51,277	1,046.03	1,046.03	0.00	0.21%	13.73
GB_TSY CREDIT	3,925	108,101	1,518.91	1,574.06	19.42	0.19%	248.93